

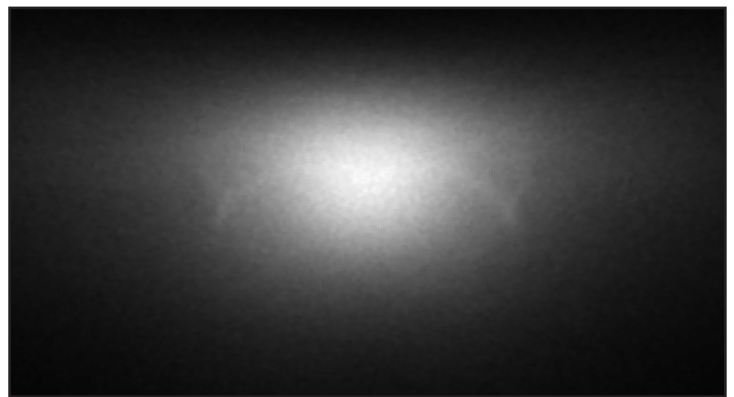
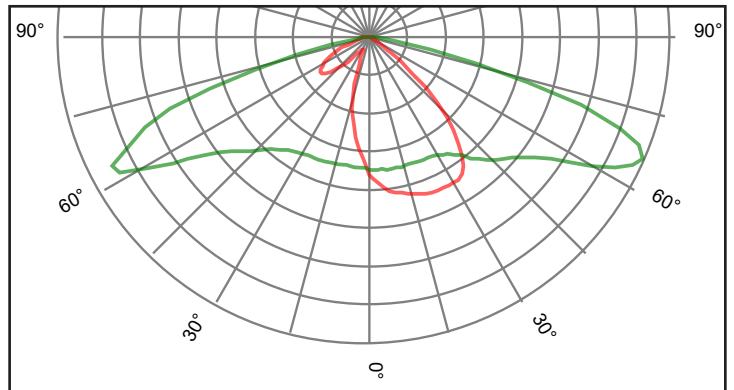
Contents

1	KNAC0601ASM	IESNA Type II Medium Cut Off	Pag. 2
2	KNAC0602ASM	IESNA Type II Medium Cut Off	Pag. 3
3	PCB made by Khatod		Pag. 4
4	Packaging		Pag. 5
5	Materials / Use and Maintenance / Disclaimer		Pag. 6

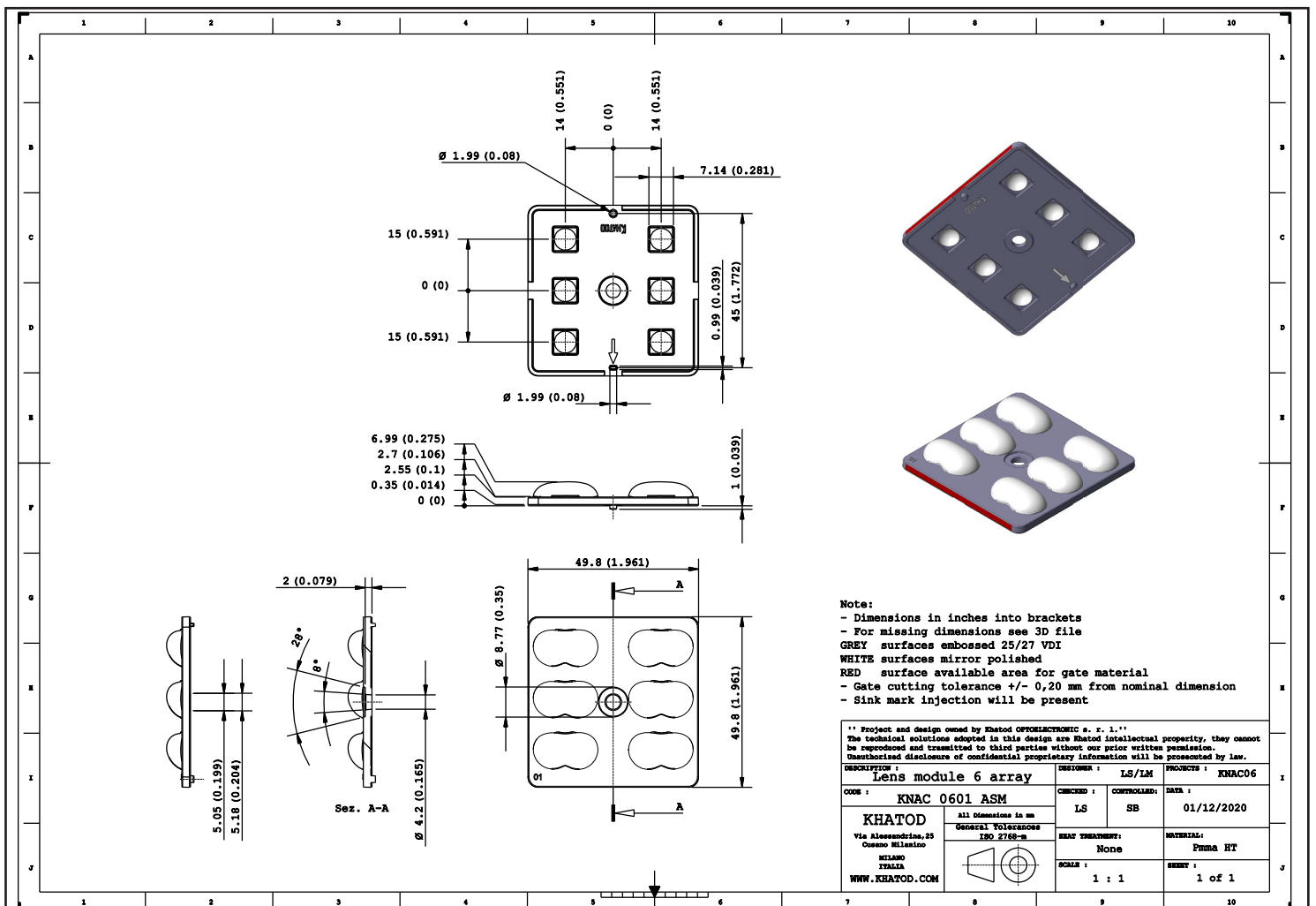
Note:

- KNAC06xxASM is the new Khatod's family of Multi-Lens Modules for outdoor applications, especially for Streets lighting applications.
- KNAC06xxASM Lens has a square shape – 50mm x 50mm – and consists of an array made of 6 lenses. It performs a IESNA Type II Medium Cut Off and Asymmetrical Beam with 5050 LEDs.
- Made of PMMA HT, the lenses work perfectly within -35° to +110°C temperature range.
- KNAC06xxASM Lens is optimized for the most popular 5050 package LEDs without dome. High lighting efficiency and excellent luminous flux. Can be used individually or configured in multiple parts so to create the perfect lighting fixture for your application, as linear lighting rows or in configurations of different shape and width.
- The Lenses are easily assembled by screw fixing.
- PMMA : **Non-yellowing, 10-year guarantee**

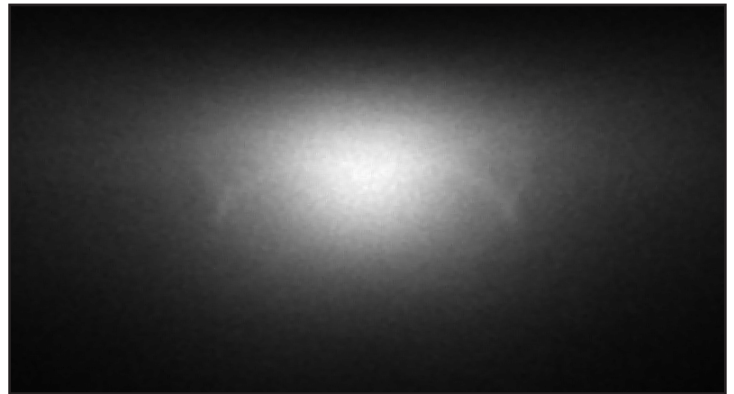
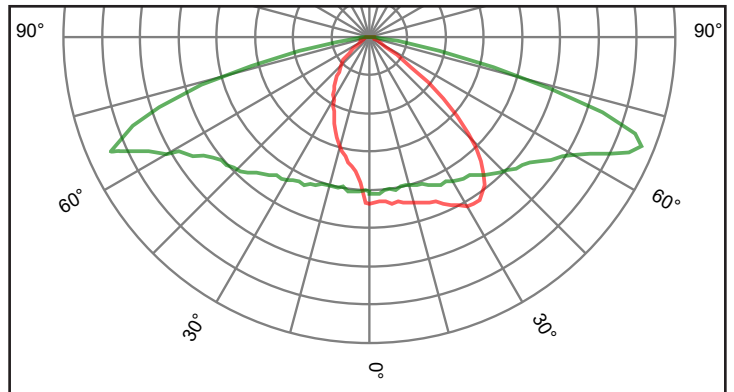
KNAC0601ASM - IESNA Type II Medium Cut Off



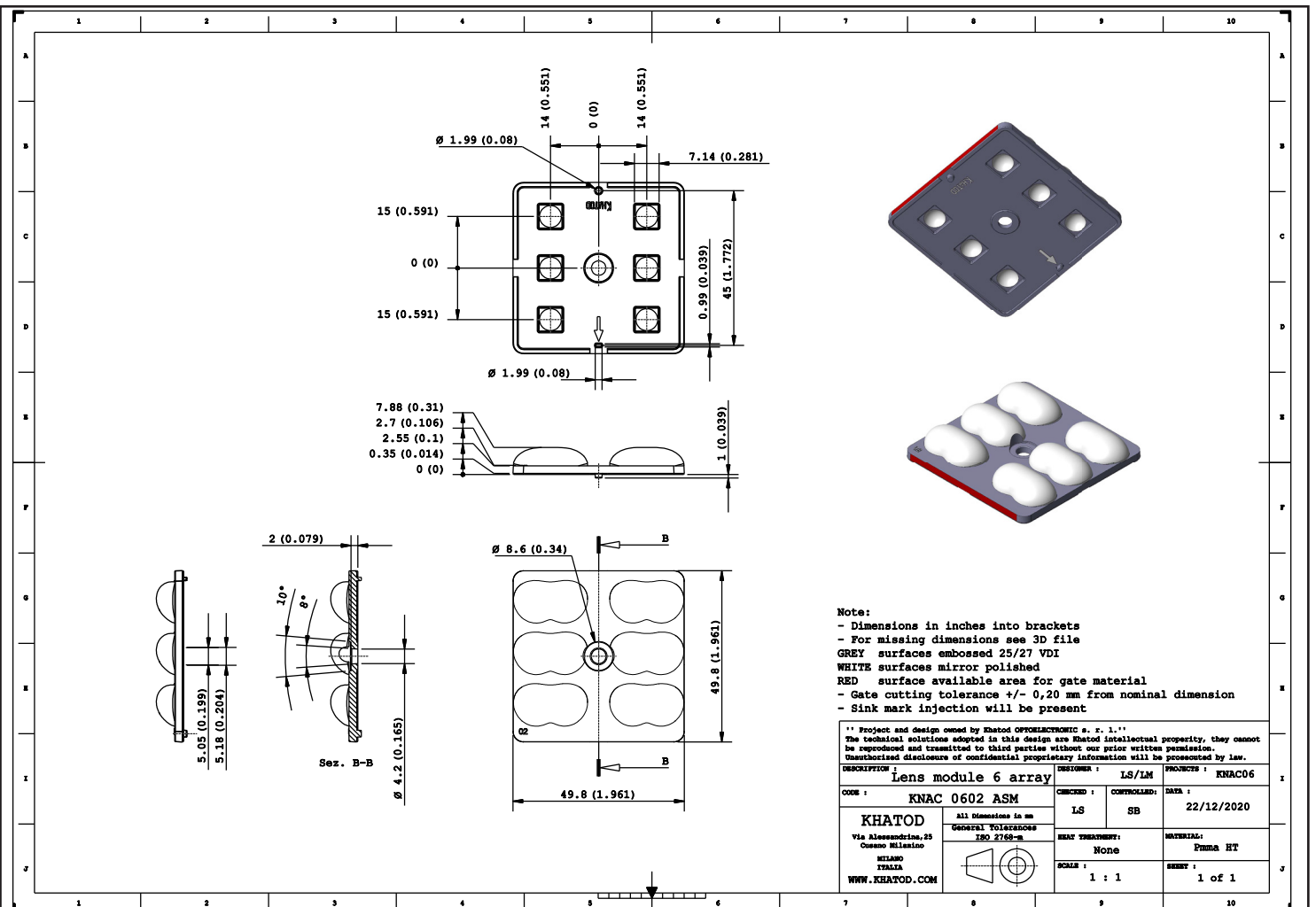
- Material = PMMA HT Clear, **Non-yellowing, 10-year guarantee**
 - Full angle at 50% from maximum: $\sim 148^\circ \times 104^\circ$
 - Full angle at 10% from maximum: $\sim 156^\circ \times 127^\circ$
- The light spots here represented refer to tests carried out with 6 LEDs 5050, and ~ 2490 Lumen



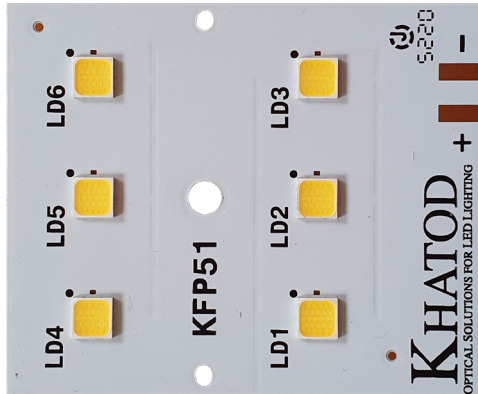
KNAC0602ASM - IESNA Type II Medium Cut Off



- Material = PMMA HT Clear, **Non-yellowing, 10-year guarantee**
 - Full angle at 50% from maximum: $\sim 144^\circ \times 62^\circ$
 - Full angle at 10% from maximum: $\sim 164^\circ \times 121^\circ$
- The light spots here represented refer to tests carried out with 6 LEDs 5050, and ~ 2490 Lumen

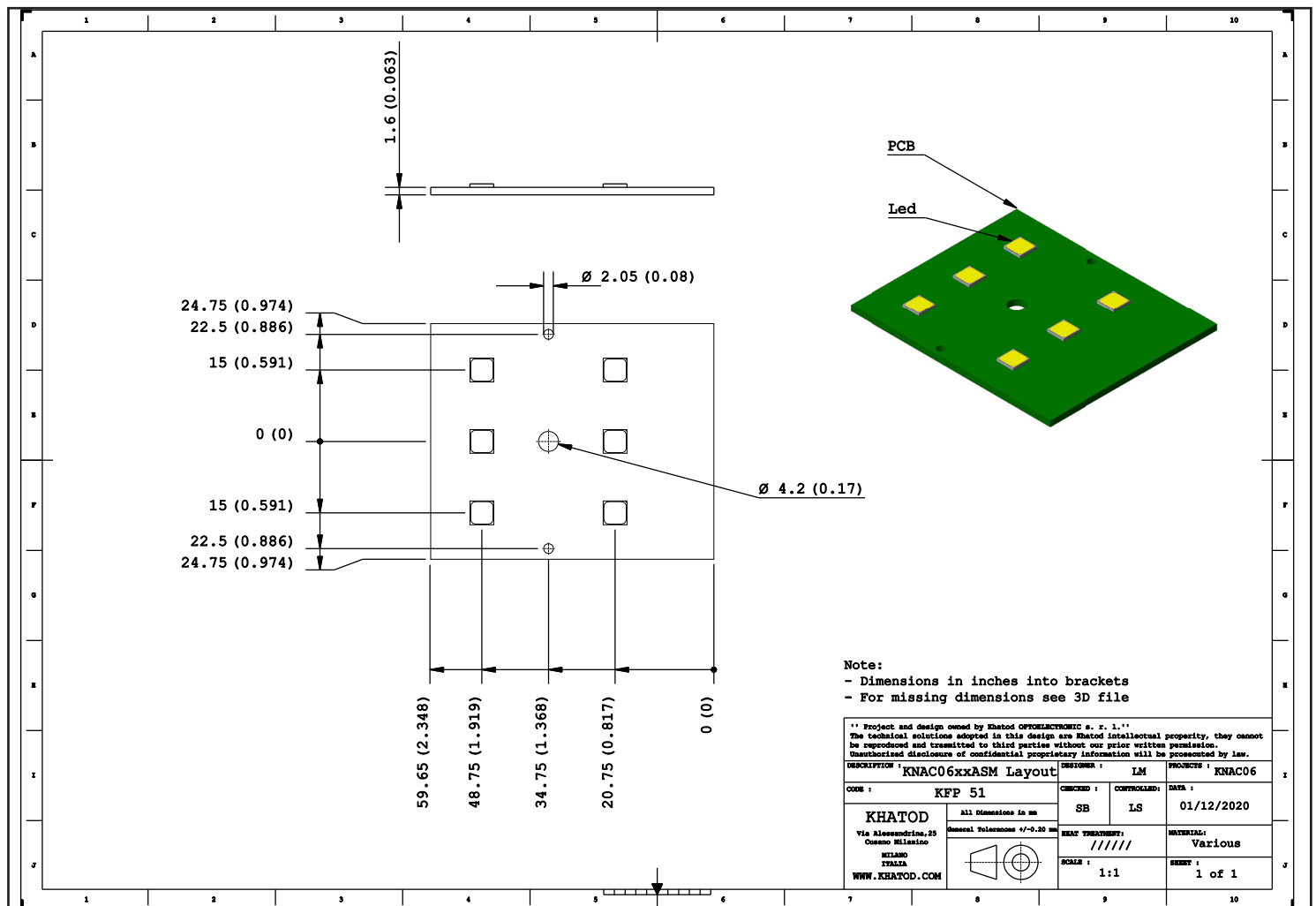


PCB made by Khatod



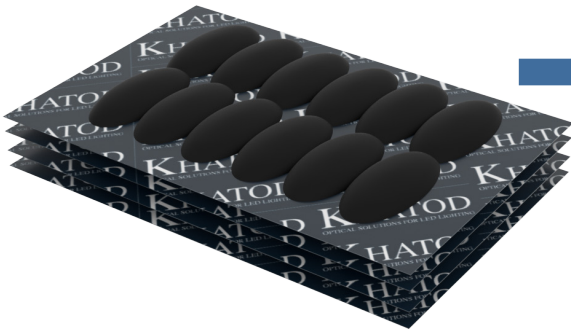
KFP51

LED : Luxeon 5050 Square



Packaging

Item	Quantity	Total Parts	Size (L*W*H)	G.W.
Cardboard	40 pcs per Cardboard	40 pcs	50*32 cm	0.52 Kg
Outer Box	37 Cardboards per Outer Box	1480 pcs	50*32*38 cm	20 Kg



37 Cardboards / 40 Modules each



37 Cardboards / Outer Box

Materials

Top

PMMA HT, Non-yellowing, 10-year guarantee	-35°...120°C
KNAC06xxASM Temperature resistance: long-term	-35°...110°C
KNAC06xxASM Temperature resistance: short exposure	up to + 110 °C

Notes:

- The optical values shown are the result of optical simulations carried out with LIGHTTOOLS, ASAP and ZEMAX software systems. The optical simulations are carried out on the basis of the typical values provided in the LED manufacturers' official datasheets. The photometric analysis has been carried out on physical samples.

Use and Maintenance

- DO NOT HANDLE OR INSTALL LENSES WITHOUT WEARING GLOVES, SKIN OILS MAY DAMAGE LENS OR LIGHT TRANSMISSION;
- CLEAN LENSES WITH MILD SOAP AND WATER AND A SOFT CLOTH;
- DO NOT USE ANY COMMERCIAL CLEANING SOLVENTS ON LENSES.

Disclaimer

Please note that flow lines and weld lines on the external surfaces of the lenses are acceptable if the optical performance of the lens is within the specifications.

Should you require further information, please contact Khatod for advice. All lens testing must be subject to identical conditions as Khatod test condition. Khatod Optoelectronic, Milan, Italy, manufactures lenses for LEDs. Any other use of the lens shall void our liability and warranty. The lenses are an inert component to be used in the manufacture of various products. Our warranty and liability are limited only to the manufacture of the lens. You may not modify, copy, distribute reproduce, license or alter the lens and related materials of Khatod. Khatod does not warrant against damages or defects arising out of the use or misuse of the products; against defects or damage arising from improper installation, or against defects in the product or in its components. No warranty of any kind, expressed or implied, is made regarding the safety of the products. The entire risk as to the quality or performance of the product is with the buyer. In no event shall Khatod be liable for any direct, indirect, punitive, incidental, special, consequential damages, or any damages whatsoever arising out of or connected with the use or misuse of the product. Khatod shall not have any obligation with respect to the product or any part thereof, whether based on contract, tort, strict liability or otherwise. Buyer assumes all risks and liability from use of the product. The laws of Milan, Italy govern this product warranty and liability and you hereby consent to the exclusive jurisdiction and venue of courts in Milan, Italy in all disputes arising out of or relating to the use of this product. Production, marketing, distribution, sale of these products as well as their possible modifications and variations are only exclusive right of Khatod Optoelectronic. No company can perform any of these actions without written permission released by Khatod Optoelectronic. The information contained in this document is proprietary of Khatod Optoelectronic and may change without notice.

REPRODUCTION PROHIBITED.