

PIXEL

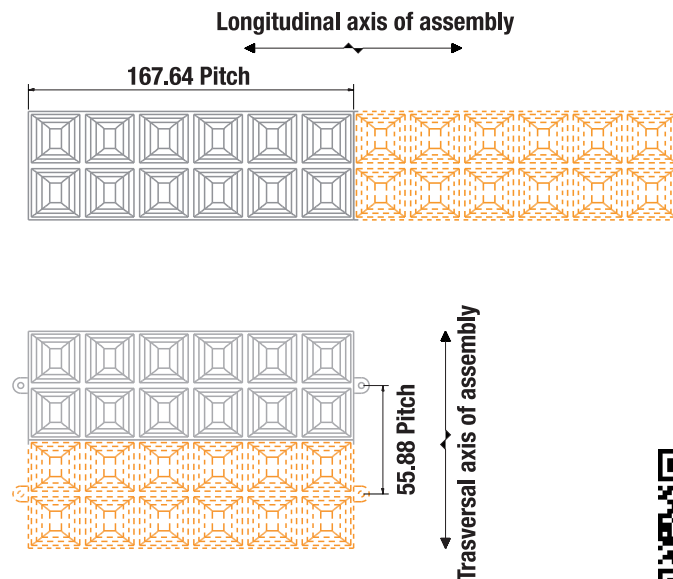
PIXEL Reflector Systems are realized in many different multi-reflector arrays, from 12 to 24 – 36 – 48 - 60 square-shaped reflectors performing a typical square shaped beam. PIXEL Systems are ready-to-use arrays provided with positioning pegs on the sides allowing an easy and immediate fitting onto the PCB.

Their special design allows for a DUAL OPTION: the arrays can be combined together by simply cutting the positioning pegs off and placing them side by side, so obtaining linear and extensive structures of desired dimensions.

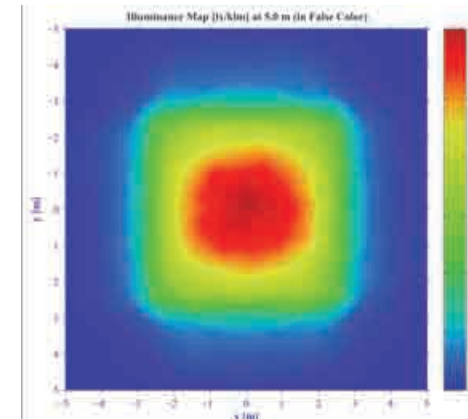
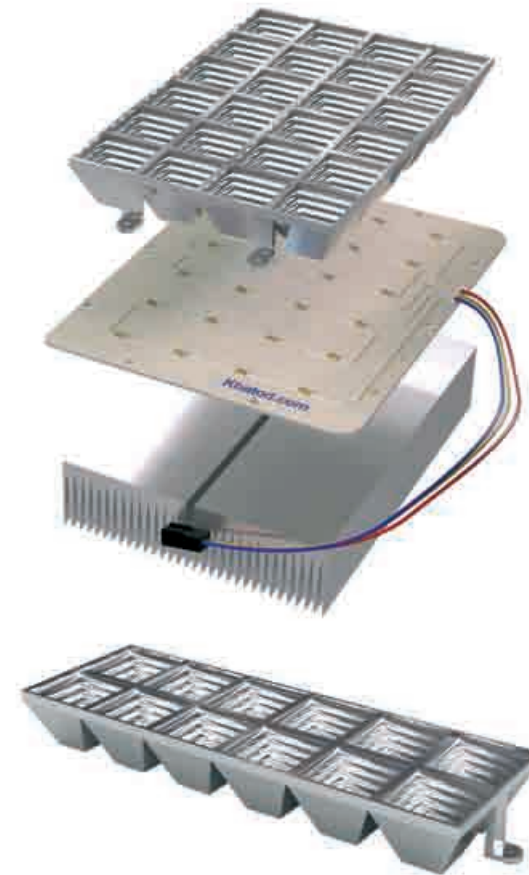
The high flexibility and versatility of their structure allow to realize countless different configurations for any applications in Wide Area Lighting, Indoor and Outdoor; Architectural Lighting; Billboard Lighting. Made of special PC for vacuum coating treatment, PIXEL Systems are fit for High Brightness LEDs from 100 to 900 lumens and over.

Deliver the most simple design while ensuring the highest in technology.

PIXEL is complying with UL94 Specifications. Is Patent pending.



PIXEL Reflector System

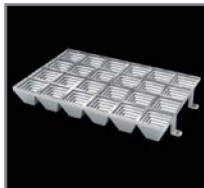


For more details

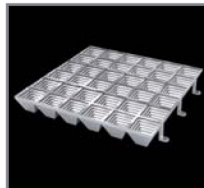
PIXEL



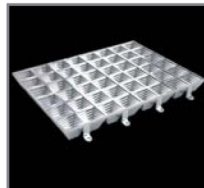
PIXEL 12 - 183,6x55,8 mm



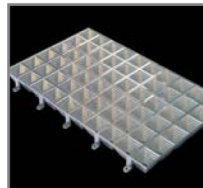
PIXEL 24 - 183,6x111,7 mm



PIXEL 36 - 183,6 x 167,6 mm



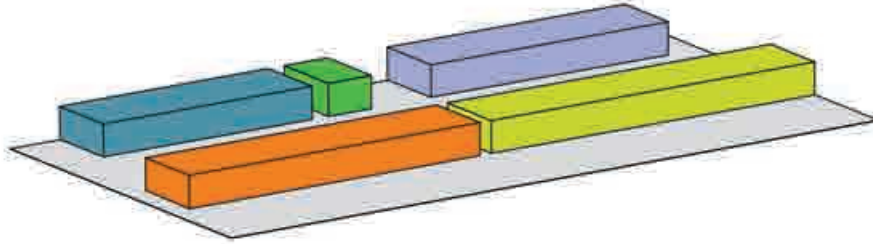
PIXEL 48 - 183,6x223,5 mm



PIXEL 60 - 183,6x279,4 mm

LUXEON	REBEL / REBEL ES LUXEON A	REBEL / REBEL ES LUXEON A	REBEL / REBEL ES LUXEON A	REBEL / REBEL ES LUXEON A	REBEL / REBEL ES LUXEON A
	183 A / 119 A / 219 A	183 A / 119 A / 219 A	183 A / 119 A / 219 A	183 A / 119 A / 219 A	183 A / 119 A / 219 A
	OSLON / OSTAR	OSLON / OSTAR	OSLON / OSTAR	OSLON / OSTAR	OSLON / OSTAR
	MLB / MX6 / XBD XML / XPE / XPG / XTE	MLB / MX6 / XBD XML / XPE / XPG / XTE	MLB / MX6 / XBD XML / XPE / XPG / XTE	MLB / MX6 / XBD XML / XPE / XPG / XTE	MLB / MX6 / XBD XML / XPE / XPG / XTE
	Z5 / Z5 P	Z5 / Z5 P	Z5 / Z5 P	Z5 / Z5 P	Z5 / Z5 P
	ASMT - JN 31	ASMT - JN 31	ASMT - JN 31	ASMT - JN 31	ASMT - JN 31
	CL - 1400 / CL - 1430	CL - 1400 / CL - 1430	CL - 1400 / CL - 1430	CL - 1400 / CL - 1430	CL - 1400 / CL - 1430
	SHUEN / SWHON	SHUEN / SWHON	SHUEN / SWHON	SHUEN / SWHON	SHUEN / SWHON
	LZ1	LZ1	LZ1	LZ1	LZ1
	3535	3535	3535	3535	3535
	LTPL - C02	LTPL - C02	LTPL - C02	LTPL - C02	LTPL - C02
	PHENIX / CRAB	PHENIX / CRAB	PHENIX / CRAB	PHENIX / CRAB	PHENIX / CRAB

100% Automated System (24 h/day)



In-House Manufacturing Facilities, over 4600 sqm

- ✓ Injection Machines
- ✓ Mould & Automation Design Department
- ✓ Mould Manufacturing & Fresnel Tooling
- ✓ Vacuum Coating Systems & Pad Printing Systems
- ✓ Silicone Optics Technology & Multi-Axis Dispensing Robots
- ✓ Optical Reflector Systems Technology & Production Equipment
- ✓ CNC Multi-Tasking Machines (Custom Lens Rework)
- ✓ Optical Design Department
- ✓ Hydrokinetic Cleaning Systems
- ✓ Laser Plotter Stations
- ✓ Ultrasonic Welding Systems
- ✓ Automated Warehouse

Quality Control, Test & Inspection

- ✓ 3D Vision Measurements
- ✓ Dark Rooms & Photometric Metrology Test Laboratory
- ✓ Laser System Controls
- ✓ Automated Packaging Systems



HEADQUARTERS



20092 Cinisello Balsamo (Milan) Italy • Via Monfalcone 41 • Phone +39 02 66013695 • Fax + 39 02 66013500

skype: khatod_ita_1 • khatod_ita_2

E-mail khatod@khatod.com • www.khatod.com



Khatod North America LLC



370 Corporate Park • 02359 Pembroke, MA • USA • Tel. +1.781.826.8164 • Fax +1.781.826.8163

E-mail khatodusa@khatod.com

KHATOD Sales Offices & Stock



khatodindia@khatod.com



khatodjapan@khatod.com

